



Central Okanagan  
Public Schools  
Together We Learn

# Transportation Services

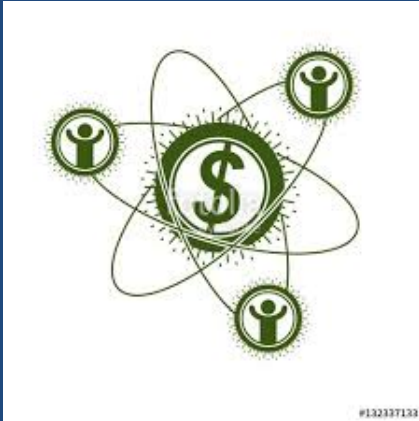
**Presented at the February 20, 2019  
Planning And Facilities Committee  
Meeting**

# BACKGROUND

- The Central Okanagan Public Schools Transportation Department transports approximately 5,000 students each day
- Largest bus fleet in the Province
- Transportation Department maintains the fleet with a full-service mechanic shop that inspects, repairs, and provides regular maintenance to all district owned vehicles and equipment.



# TRANSPORTATION REQUIREMENT



- Transportation service is not a requirement under the School Act but Boards may choose to assist in providing this service.
- Central Okanagan School District has historically and continues to be committed to providing a safe and efficient student transportation system.
- Manage a service level that will be sustainable year to year and accommodate future growth and changing demographics.

# ROUTE REVIEWS

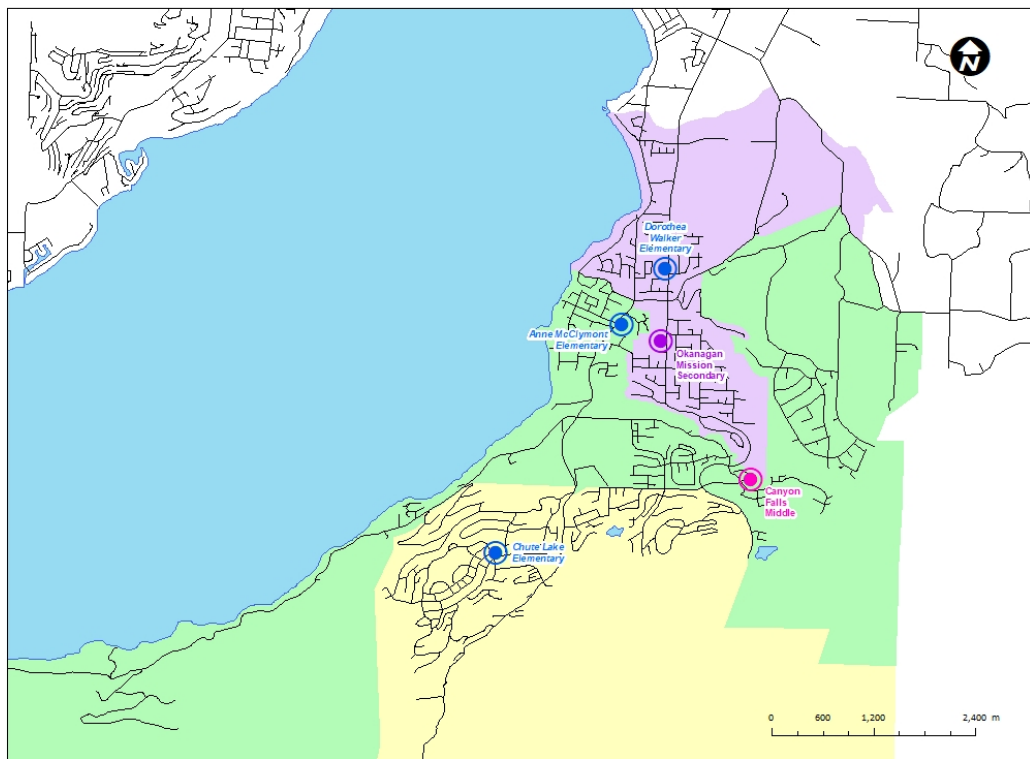
- Transportation Department continually review's bus routes
- Route adjustments or changes can include the addition or removal of bus routes and/or services.
- When reviewing and planning bus routes, student safety, costs, distances, road conditions, and the number of students involved are all factors that must be considered
- Consider new development areas for future planning of transportation needs.



# SOUTH CENTRAL KELOWNA

Transporting  
789 Students

South Central Kelowna Area

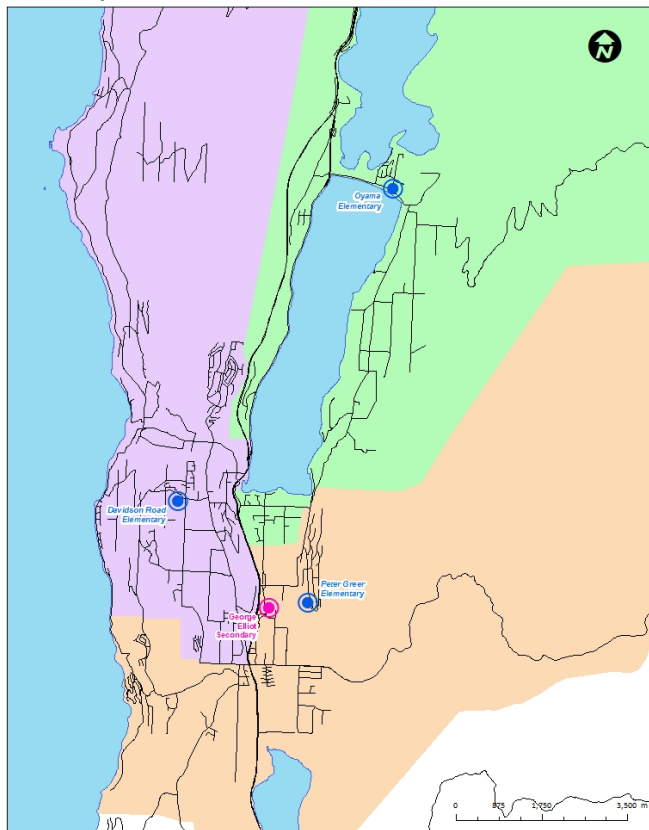


Central Okanagan  
Public Schools  
Together. We Learn

# LAKE COUNTRY

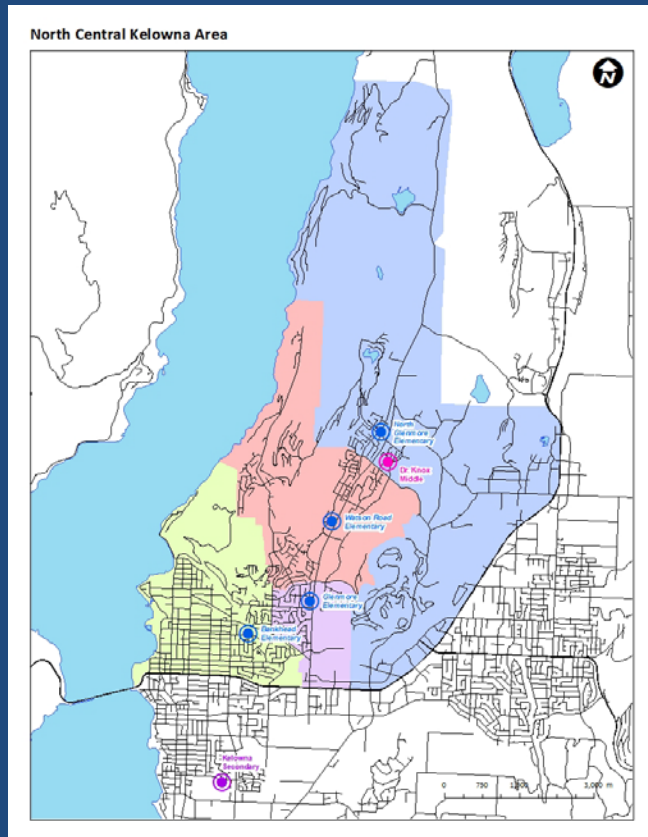
Transporting  
642 Students

Lake Country Area



# NORTH CENTRAL GLENMORE

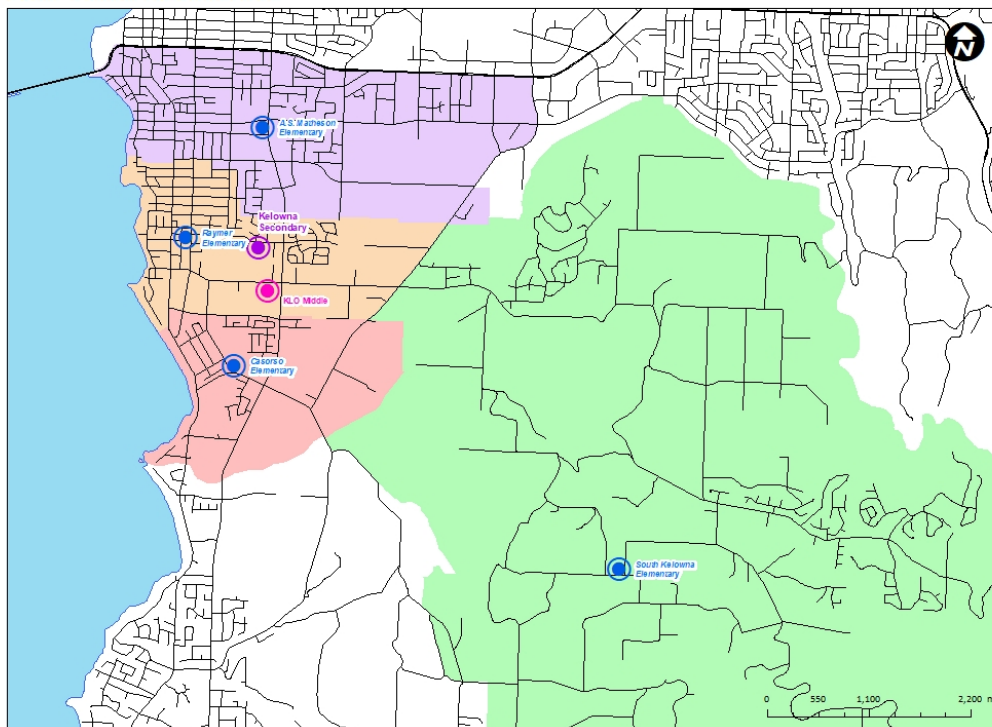
Transporting  
475 Students



# SOUTH CENTRAL KELOWNA

Transporting  
809 Students

South Central Kelowna Area



Appendix XX



Central Okanagan  
Public Schools  
Together. We Learn



The map displays the Rutland Catchment Area, divided into several colored zones: a large orange area in the north and east, a yellow area in the center, and a pink area in the south. A white area represents the River Great Ouse and its tributaries. Numerous locations are marked with blue dots and labeled: "Rutland Water" (top right), "Rutland Water" (middle right), "Rutland Water" (middle left), "Rutland Water" (bottom left), "Rutland Water" (bottom center), "Rutland Water" (bottom right), "Rutland Water" (bottom left), "Rutland Water" (bottom center), "Rutland Water" (bottom right), "Rutland Water" (bottom left), "Rutland Water" (bottom center), "Rutland Water" (bottom right). A scale bar at the bottom right indicates distances from 0 to 2,000 meters. A north arrow is located in the bottom right corner.

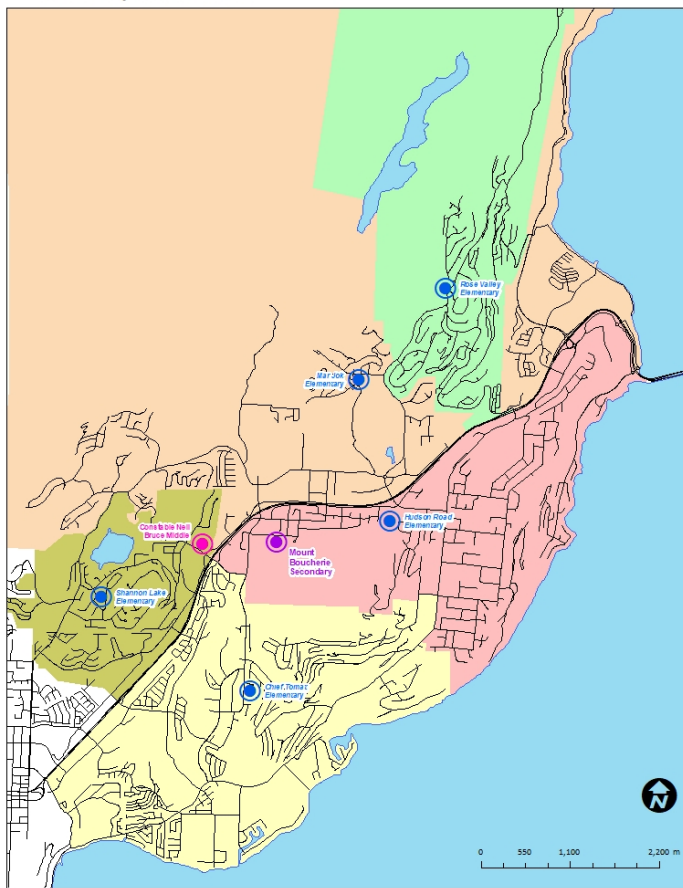


**Central Okanagan  
Public Schools**  
Together We Learn

# WEST KELOWNA - CNB

Transporting  
1371 Students

CNB Family Westside Area



Central Okanagan  
Public Schools  
Together We Learn

# Transporting 317 Students



# ELIGIBILITY

- Eligible students for grades K-3 are at least 4.0 kms away from their catchment school and 4.8 km away for Grades 4-12.
- Distances are not a measure of what the District feels is an appropriate distance to the school.
- These are historical walk limits originally determined by the Ministry of Education.



# SCHOOL BUS REGISTRATION

- School bus routes are developed based on the registration of eligible ridership.
- Once registration deadline has passed, courtesy wait registrations are processed and assigned a seat on a bus route, provided:
  - a) there is seat space available on the school bus*
  - b) the student meets the bus at an existing stop along the route; and,*
  - c) the fee for transportation service has been paid*



# SCHOOL BUS REGISTRATION

- Students requiring transportation in the District must be registered for the school bus, each year.



**School District No. 23**

(Central Okanagan)

**Student Transportation Payment System**



District Login

## Secure Online Transportation Request Form

To complete a secure online transportation request you must have a valid email address.

**To Start the Registration Process Click Here**

Student Transportation Payment System © 2019 Central Okanagan School District (SD23),  
All Rights Reserved.

This program is protected by international copyright laws as applicable.

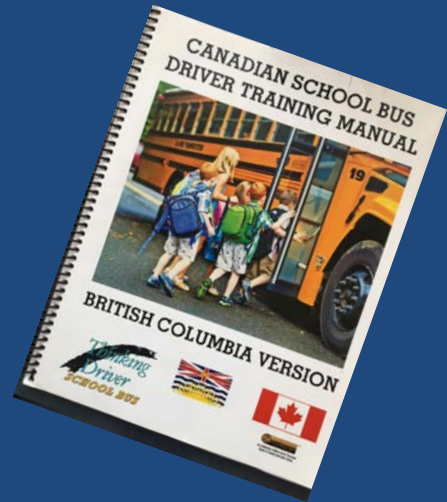
<https://transportation.sd23.bc.ca/>



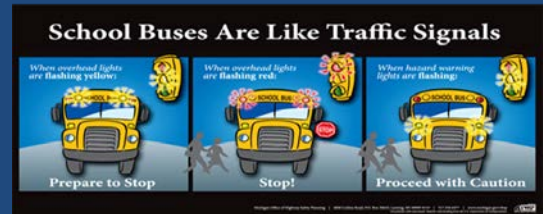
Central Okanagan  
Public Schools  
Together. We Learn

# SCHOOL BUS SAFETY

## Canadian School Bus Driver Training Program



## We Stop – You Stop



# SCHOOL BUS STOP

## ATTENTION: Parents, Students and Schools



Central Okanagan  
Public Schools  
Together We Learn

### Central Okanagan Public Schools

is pleased to offer the "School Bus Stop" which is located on our website at [www.sd23.bc.ca](http://www.sd23.bc.ca)



School Bus Stop

Parents, students and schools can now sign up to receive email or text alerts when the school bus route is delayed.

To register for alerts and to view a complete list of bus routes displaying the current status, select the school bus icon on our website at [www.sd23.bc.ca](http://www.sd23.bc.ca) or go to the site directly at <https://schoolbusstop.sd23.bc.ca>

Our first priority is the safety and well-being of our students. Due to the varied reasons our school bus routes may be delayed or in extreme situations, cancelled, it is not practical for drivers or staff to personally phone all those affected. Safety is everyone's responsibility and we must all be diligent when staying up to date on the status of our school bus routes.

**All school bus route cancellations and delays in excess of 15 minutes will be posted on the "School Bus Stop"**

If you have signed up for the alerts, upon posting the delay, you will receive an email or text with the route delay, length of delay and reason for the delay.

You could also expect to see general alerts when weather conditions or an emergent situation arises regarding the bus route.

#### TRANSPORTATION SERVICES

7:00 AM—5:00 pm

250-870-5151

[transportation@sd23.bc.ca](mailto:transportation@sd23.bc.ca)

**STAY INFORMED ON BUS ROUTE DELAYS—SIGN UP TODAY!**



Central Okanagan  
Public Schools  
Together We Learn



# SCHOOL BUS STOP



Central Okanagan Public Schools  
SD No. 23 | Together We Learn



## School Bus Stop

No School For Students on Feb. 22 2019

 Find My Route

 Subscribe Now

### SPECIAL NEEDS ROUTES

1 SPED-PETER GREER, G. ELLIOT On Time

Last Updated 19-Feb-2019 10:55 AM

2 PRE/RMS/RSS/SVM - SPED WC On Time

Last Updated 19-Feb-2019 12:00 AM

3 SPED - RLW/RMS/RSS On Time

Last Updated 19-Feb-2019 12:00 AM

4 SPED - BKE,SMS, AND RSS On Time

Last Updated 19-Feb-2019 12:00 AM

5 SPED- DRK, KSS, CAS On Time

Last Updated 19-Feb-2019 12:00 AM

6 SPED NGE, KSS, KLO On Time

Last Updated 19-Feb-2019 12:00 AM

7 SPED - OKM,CAS,AME On Time

Last Updated 19-Feb-2019 12:00 AM

8 SPED- HUDSON, MBSS,CNB AM ONLY On Time

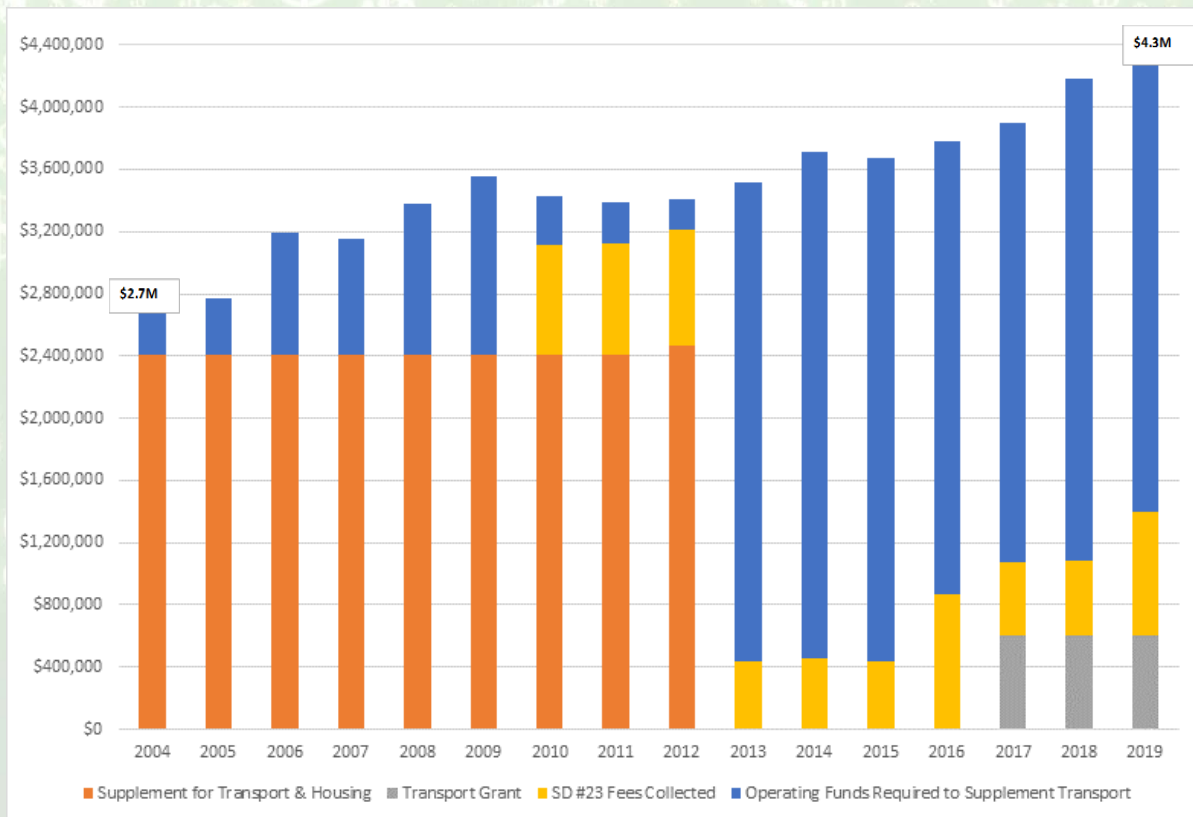
Last Updated 19-Feb-2019 12:00 AM

9 SPED-SLE, MBSS, CNB,MJE On Time



Central Okanagan  
Public Schools  
Together We Learn

# TRANSPORTATION FUNDING



# PROCEDURE & POLICY

- Planning school bus routes has its challenges as there are multiple changing factors throughout the school year.
- These include growth, late registrations, and family movement around the District, courtesy waitlists, educational programing, geographic accessibility, road upgrades, and the occasional capping of schools.
- To effectively address the issues in the annual planning of bus routes the, the department applies policies and procedures as outlined in:



Policy 470 – Transportation Services Management

Policy 470R – Transportation Services Management (Regulations)

Policy 475 – Transportation: Authority and Responsibility

Policy 475R – Transportation: Authority and Responsibility  
(Regulations)



# TRANSPORTATION PLANNING

The Transportation Department has started planning for the 2019/2020 school year. Some of the significant changes and challenges for the upcoming year include:

- Opening of Canyon Falls Middle School
- Expansion of French Immersion programs to Hudson Road Elementary School and Glenrosa Middle School
- Some bus routes at full capacity
- Increased demand for courtesy riders
- Transportation of students who were directed from a capped school

# 2019 - 2020



# CONSIDERATIONS

If the Transportation Guidelines are applied as they are currently written there are a number of outcomes that the Board should be aware of:

- Chute Lake Elementary school is currently capped. Students that are therefore in the Chute Lake Catchment are currently provided transportation to Anne McClymont Elementary. A number of families in this area have also chosen to attend Dorothea Walker to access the French Immersion Program and have been provided transportation as courtesy riders to that school. With the opening of Canyon Falls Middle School, Chute Lake Elementary will likely no longer be capped.
- Canyon Falls Middle school is opening in September, 2019. Initial planning for bus routes indicates, of the 472 students planning to be moved to Canyon Falls, only 14% are considered eligible.
- With French Immersion being expanded to the Westside a number of parents are concerned that due to the location of Glenrosa Middle School they would be challenged to transport their children as it would require backtracking to the school before moving into Kelowna or West Kelowna.



# CONSIDERATIONS

The Board should be cautioned that any changes to regulations at this time will have a domino affect throughout the District. Careful planning will be required to identify the full impact of any changes.

In order to move forward:

- What will they do with the students that are currently being transported from the Upper Mission? Will they be grandfathered?
- If consideration is given to transport French Immersion students in any area will this be extended to other areas?
- Would the bussing of French Immersion students only apply to Elementary students or all?
- Would bussing for specialty programs only be provided for French Immersion or expanded for other programs?
- Once the guidelines are determined do we have enough buses?
- Do we have enough bus drivers?
- Should the walk limit being reviewed?
- How should we determine how courtesy riders are accepted?
- What is the appropriate level for the Transportation Fee?
- Should we review the registration deadlines for determining eligible riders?

