



Modified & Life Skills Programs



Overview:

- What are modified/adapted life skills programs?
- Locally Developed courses in our district
- School-based collaborations
- Life skills oriented programs
- Transition to Employment
- Community collaborations





Life Skills Opportunities (Adapted/ Modified)

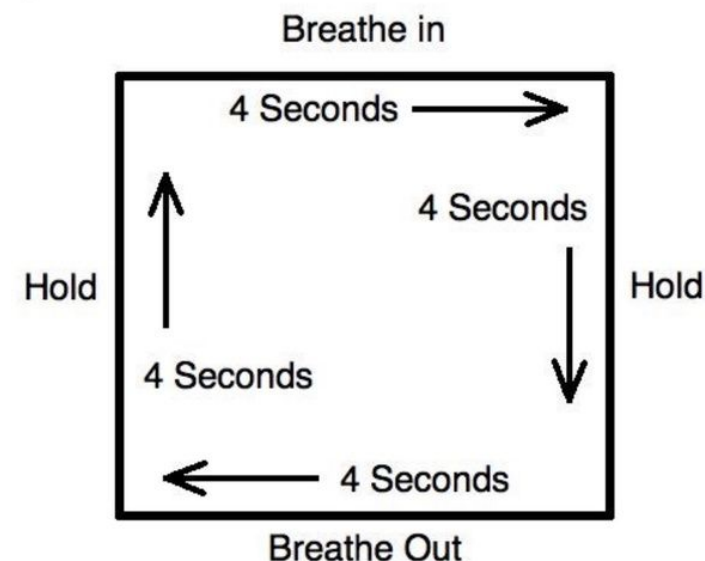
- District, school based, *individualized*
- Benefits a spectrum of learners
- May be course by course (partially) or fully modified program
- May include locally developed courses, community activities/opportunities, and/or individualized programming
- 1 to 1, small group, large group instruction





Individualized Programming

- Social emotional goals
- Executive functioning goals
- Social skills programming
- Life skills programming
- Transition to employment preparation
- School level job carving
- IEP based programming
- In class/pull out/scheduled time



help



Locally Developed Courses

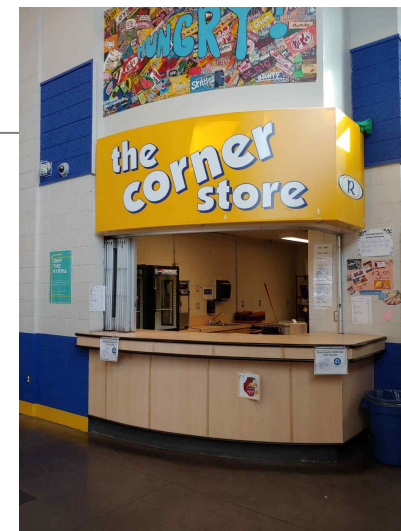
- Foods
- Physical Education
- Metal Work
- Careers/Planning
- Lifeskills
- Art
- Support Block





School Store

- Employment Prep
- Budgeting
- Shopping skills
- Following directions
- Money management
- Time management
- Customer service
- Social skills
- And more.....



Work Experience

- Supported development of employability skills
- Gain practical/hands-on experience outside the school environment
- Explore community workplaces
- Increase awareness of interests and aptitudes
- Build self-confidence





Work Experience Program

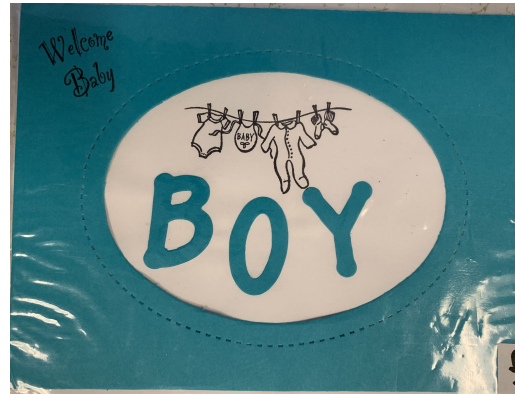
- Pre employment skills
- Resume writing
- Interview practice
- On job training
- Practice and repetition
- CEA support
- Bussing practice
- Time management
- Community/school based
- And much more.....





Cutter's Edge

- Service-Learning Program
- Life and vocational skills
- Creating, selling, delivering cards
- Organization
- Money Management
- Preparation for Job Carving





Boojangles

- Jewellery Art
- Hands On
- Creativity
- Indigenous Learning
- Life Skills:
 - Money/pricing
 - Product Advertising
 - Community Connection
 - Social Communication





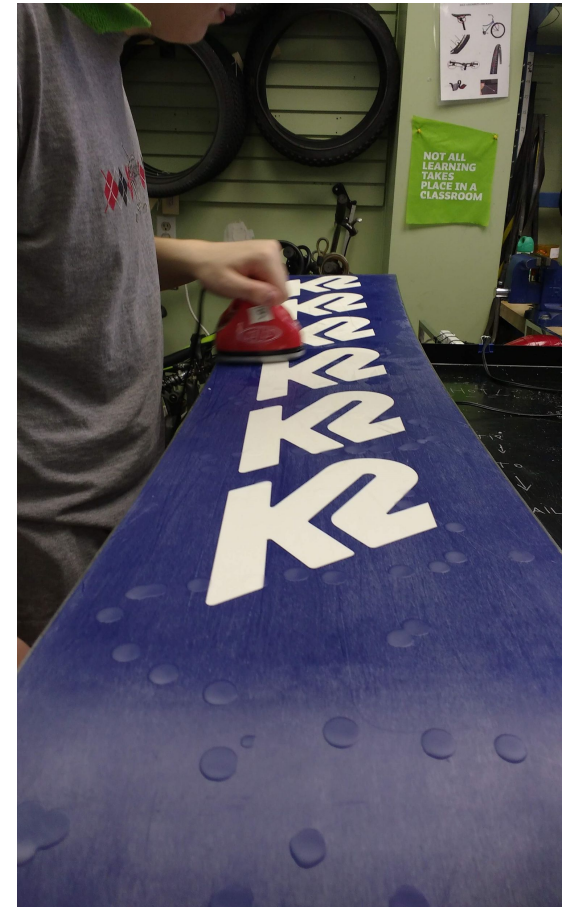
OWL's Nest

- Foods Teacher directed
- CEA support
- Safe food handling practices
- Taking orders
- Handling money
- Customer Service skills
- Following Directions
- Social Skills
- Executive functioning



WHEELS Transition to Employment

- Skill development in key transition areas
- Vocational Training
- Support for paid employment
- Build overall employment skills
- Job support





Community Partnerships

- Jumpstart - YMCA paid work preparation program
<https://www.ymcaokanagan.ca/Programs/Employment-Services/YMCA-Jumpstart-to-Employment-Essentials>
- Cool Arts Society <https://www.coolarts.ca/>
- Various work experience partners in the community
(Independent, IGA, Share Society Thrift Store, Old Navy, Food Bank, Bottle Depot, etc.)
- Adult Special Education Okanagan College
- Okanagan College Dual Credit Programming



Community Partnerships

- Share Society Thrift Store
- Various Community Centres
- Capri Bowling Lane
- Parkinson's Recreation Centre
- Work BC
- ARC Programs <https://arcprograms.com/>
- WorkBC
- And many more.....



Questions?

Thank you for the opportunity to share our experiences, learning opportunities and resources with all of you.

For further information or follow up questions, we can be contacted at:

kristyn.marshall@sd23.bc.ca

jeff.prasad@sd23.bc.ca